

# IQ System

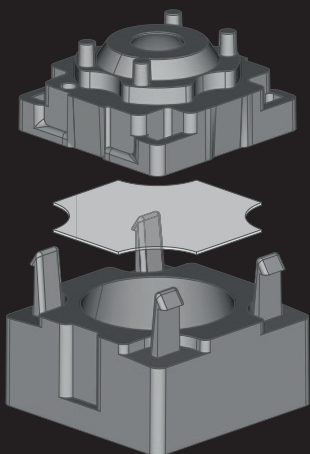
Freedom in Luminaire Design



IQ System is a miniaturized modular system of optical components designed for use in combination with a single LED or LED arrangements.

It is available in black and white and has a broad range of precise, low glare light distributions.

## CONSISTING OF THE FOLLOWING COMPONENTS:



Pre-collimating reflector  
for enhanced efficiency

Nano-structured film  
with various light distribution  
options

Anti-glare cover, available  
in black and white



## MAIN BENEFITS:



Low  
glare



Slim  
and innovative



Precise light  
management



Significant energy  
and material savings



Carbon footprint  
reduction



Miniaturization  
of design



Developed  
and produced in EU

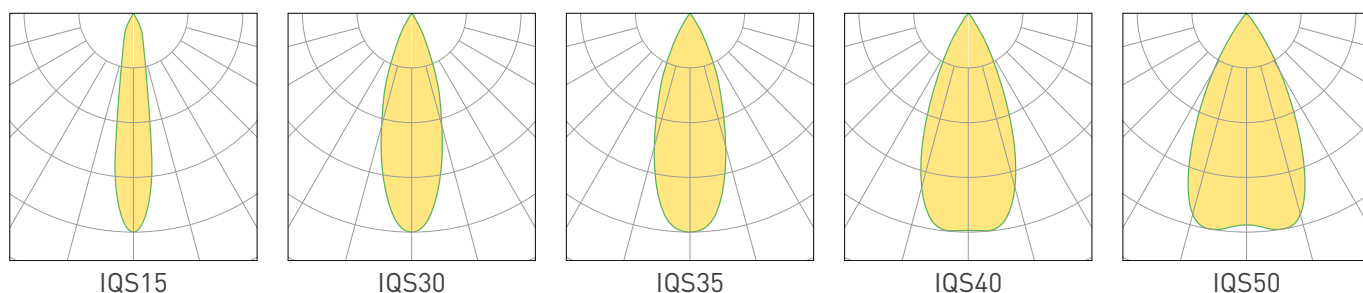
With multiple light distribution options and design possibilities only limited by your imagination, IQ System is the full package for all your accent lighting needs.

## TECHNICAL PARAMETERS

### OPTICAL MODULE

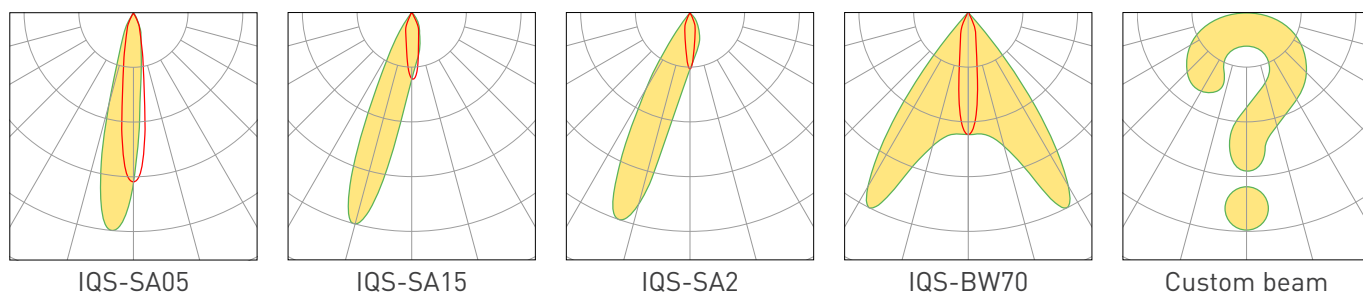
Shape	square
Outer Dimension (WxDxH)	12 x 12x 11.2 mm
Input Aperture	3 mm dia.
Output Aperture	11.5 mm dia.
LED Type	up to 2.9 mm dia.
Base Material	PC / ABS

## CIRCULAR



Model	Beam type	Efficiency	Beam width	Peak intensity [cd/lm]	Peak angle
IQS15	circular	69.00 %	16°	7.8	0°
IQS30	circular	68.00 %	29°	3.2	0°
IQS35	circular	64.00 %	34°	2.7	0°
IQS40	circular	61.00 %	42°	1.9	0°
IQS50	circular	59.00 %	50°	1.5	0°

## ASYMMETRIC



## TAILORED

Model	Beam type	Efficiency	Beam width	Peak intensity [cd/lm]	Peak angle
IQS-SA05	single asymmetric	65.00 %	17°	6.8	5°
IQS-SA15	single asymmetric	60.00 %	19°	5.5	15°
IQS-SA20	single asymmetric	62.00 %	21°	5.3	19°
IQS-BW70	batwing	57.00 %	72°	2.9	27°