

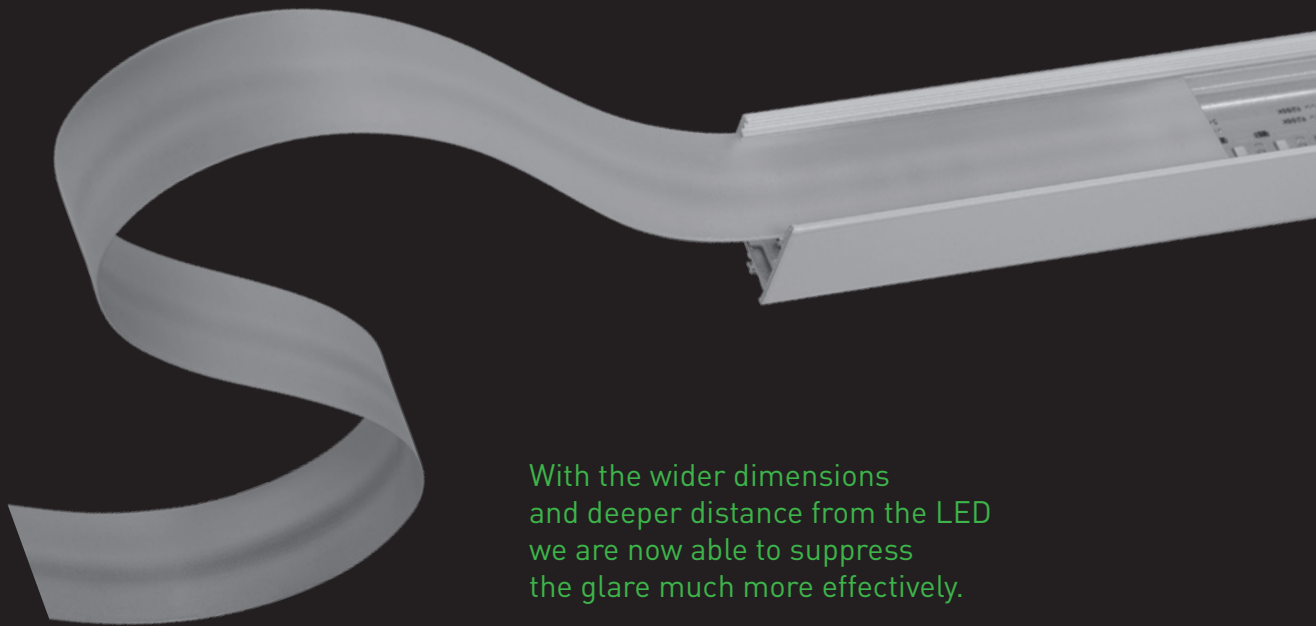
NANOPTIQS

OPTICS REDEFINED

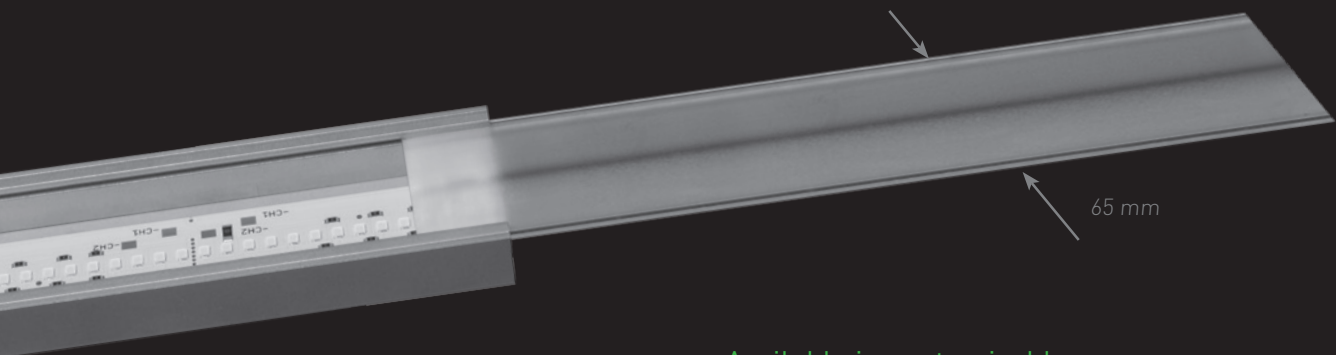
IQ Linear 65

Slim and innovative optics for wider substrates with lower glare.

Three available LDCs including a new customer inspired single asymmetric beam now available in wider substrates.



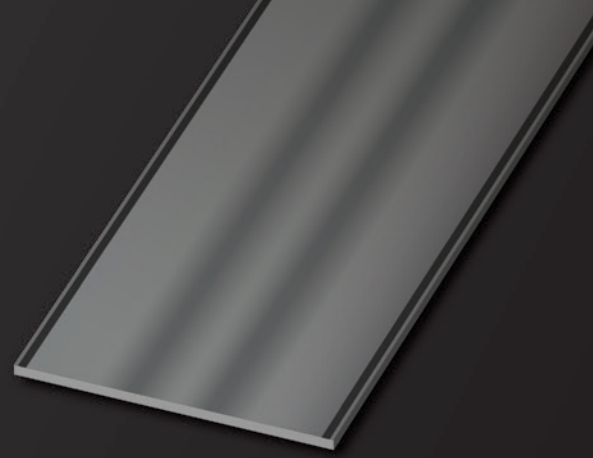
With the wider dimensions and deeper distance from the LED we are now able to suppress the glare much more effectively.



Available in customizable dimensions.

ELBO 3W

Double Asymmetric Distribution with Broad Peaks and Accented Downward Illumination.



Light Distribution Parameters

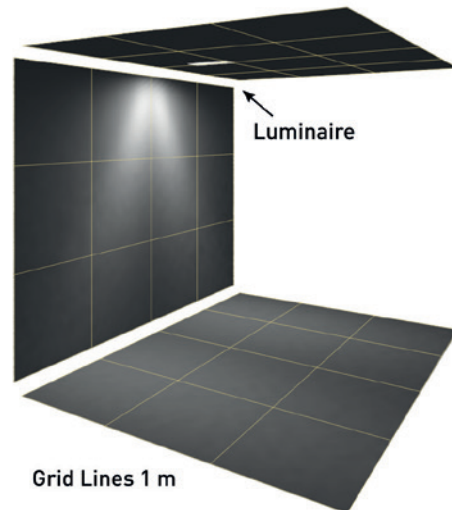
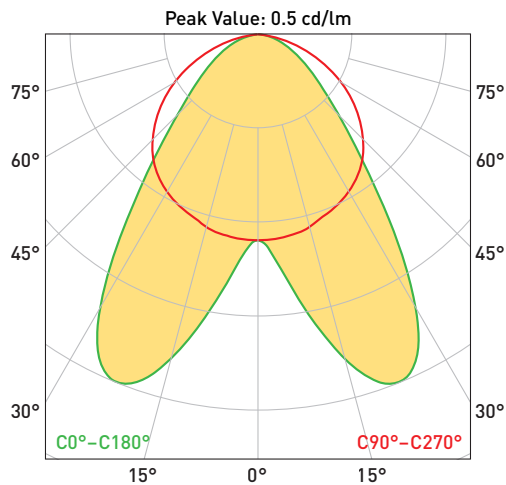
Code	ELBO 3W
Beam Type	Double-asymmetric
Beam/Peak Width	76°/38°
Peak Angle	-20°/+20°
Peak Intensity	0.5 cd/lm
Efficiency	96%

Typical parameter values for standard configuration.

Dimensions and Material

Width*	up to 65 mm
Thickness*	PMMA (1.5–2 mm), PC film (0.125–0.500 mm)
Length*	up to 2000 mm
Nominal Distance to LED	20 mm
Material	PMMA, PC film

* Customizable dimensions available to meet your individual needs.

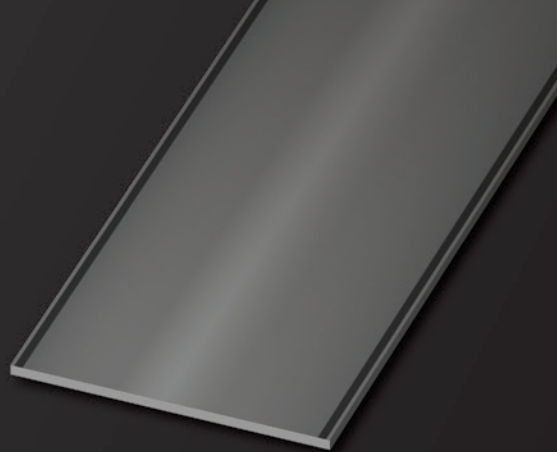


Application Suggestions

- Double asymmetric distribution with broad peaks and accented downward illumination.
- Can be used for illumination of shelves and corridors in supermarkets, libraries, archives, galleries, or warehouses.
- Suitable for corridor wall, floor illumination and indirect lighting.

NUBO 1W

Standard Batwing Distribution.



Light Distribution Parameters

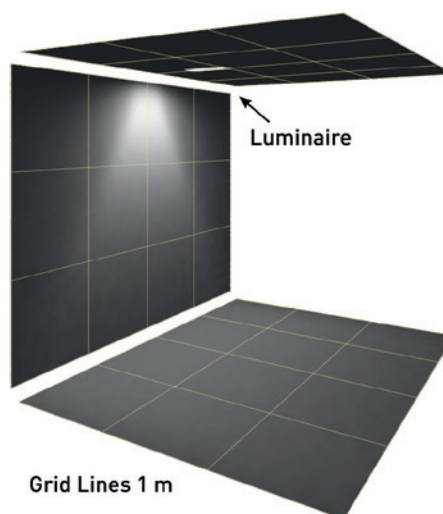
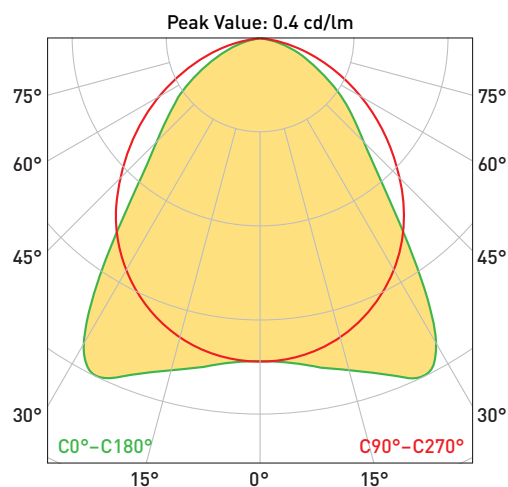
Code	NUBO 1W
Beam Type	Medium wide
Beam Width	80°
Peak Angle	-26°/+26°
Peak Intensity	0.4 cd/lm
Efficiency	96 %

Typical parameter values for standard configuration.

Dimensions and Material

Width*	up to 65 mm
Thickness*	PMMA (1.5–2 mm), PC film (0.125–0.500 mm)
Length*	up to 2000 mm
Nominal Distance to LED	20 mm
Material	PMMA, PC film

* Customizable dimensions available to meet your individual needs.

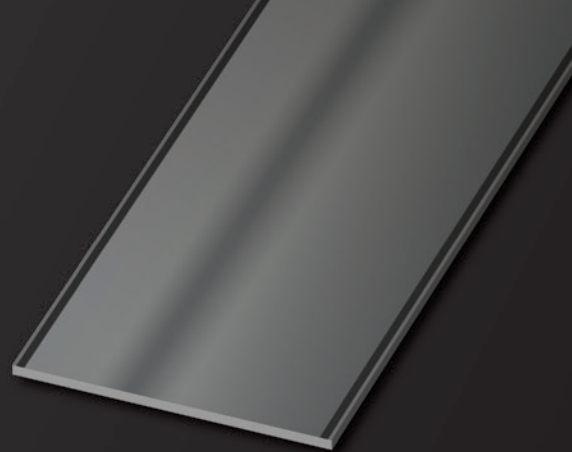


Application Suggestions

- Standard batwing distribution, suitable for uniform illumination of various surfaces.
- Can be used for illumination in residential houses, offices, and industrial workspaces, meeting, or conference rooms, receptions, and classrooms.
- Also suitable for ceiling illumination to achieve indirect lighting.

DARLO 3W

Single asymmetric distribution with a broad peak and enhanced side illumination.



Light Distribution Parameters

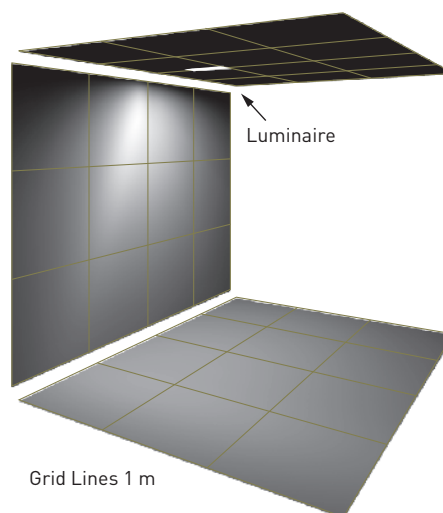
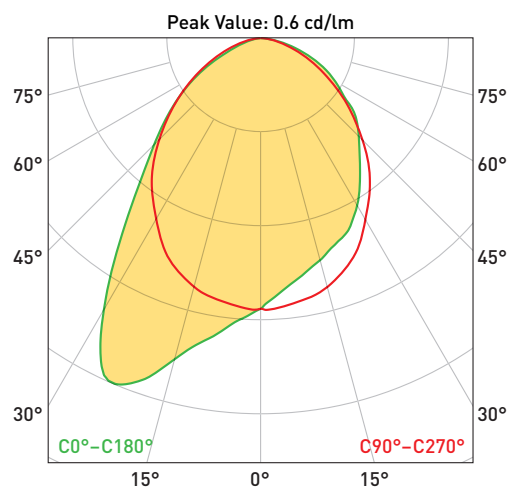
Code	DARLO 3W
Beam Type	Asymmetric
Beam/Peak Width	72°
Peak Angle	23°
Peak Intensity	0.6 cd/lm
Efficiency	95%

Typical parameter values for standard configuration.

Dimensions and Material

Width*	up to 65 mm
Thickness*	PMMA (1.5–2 mm), PC film (0.125–0.500 mm)
Length*	up to 2000 mm
Nominal Distance to LED	20 mm
Material	PMMA, PC film

* Customizable dimensions available to meet your individual needs.



Application Suggestions

- Single asymmetric distribution with a broad peak and enhanced side illumination for smooth wallwashing, suitable for wall and floor illumination or indirect lighting.
- Can be used for illumination of large rooms or corridors, workspaces, receptions, galleries, and halls.
- Can be also effectively used in multipurpose luminaires for small shops or even houses to reduce the number of light fixtures.